

Two Day Workshop

Hands on Session on PCB Design & Fabrication

Registration form

Name:
Year/Semester:

Address:

Phone No:
Mobile No:
Email ID:

Date:
Amount:

Signature:

Chief Patron

Sri. K. Krishna Rao, Correspondent

Patron

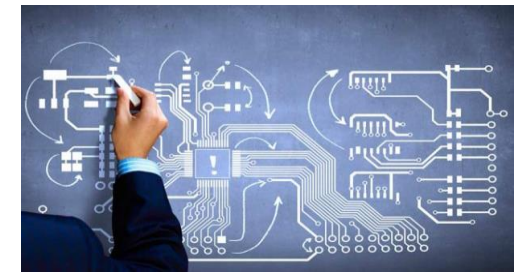
Dr A Vinayababu, Director
(Academics & Accreditation)
Dr. Satyaprasad Lanka, Principal

Coordinators

T.Prasanna, Associate Prof, ECE
U.Himavarsha, Assistant Prof, ECE

Two Day Workshop

Hands on Session on PCB Design & Fabrication



Date: 17 Feb-18 Feb 2018

Time: 9.30 AM -4:30 PM

Venue: Seminar Hall E Block

Coordinators

T.Prasanna, Associate Prof, ECE
U.Himavarsha, Assistant Prof, ECE

Organized by



**Department of Electronics and
Communication Engineering**

Website: www.stanley.edu.in

Stanley College of Engineering and Technology for
Women, Abids Hyderabad-500001

ABOUT THE COLLEGE

Stanley College of Engineering and Technology for Women - a temple of learning, a subsidiary of Indur Educational Society was established in the year 2008 on a sprawling 6-acre campus of historic Stanley College campus at Abids, Hyderabad. The college provides a serene and tranquil environment to the students, boosting their mental potential and preparing them in all aspects to face the cut-throat global competition with a smile on the face and emerge victorious. Stanley College of Engineering and Technology for Women has been established with the support of Methodist Church of India that has been gracious and instrumental in making the vision of an Engineering College on this campus a reality.

The College is affiliated to the prestigious Osmania University, Hyderabad. It has been approved by AICTE, New Delhi and the Government of Telangana. It has been sanctioned four UG-courses – Electrical and Electronics Engineering, Computer Science Engineering, Electronics and Communication Engineering, Information Technology and the PG courses – M Tech in CSE, SE, Embedded Systems and MBA.

ABOUT THE WORKSHOP

A printed circuit board, or PCB, is used to mechanically support and electrically connect electronic components using conductive pathways, tracks or signal traces etched from copper sheets laminated onto a non-conductive substrate. Today printed circuit boards are used in virtually all but the simplest commercially

produced electronic devices, and allow fully automated assembly processes that were not possible or practical in earlier era tag type circuit assembly processes. Consumers are driving industry growth with a desire for cool products. Great technology is no longer enough to differentiate a product. It must be squeezed into a "cool" package in order to sell. This has an effect on everything inside the box -- including the PCB, the chips and what's packaged on the chips.

ELIGIBLE CANDIDATES

ECE

IISEM

COURSE CONTENT

- **Designing the Layout**
- **Etching the Board**
- **Drilling (Both Hand Driller & Machine Driller)**
- **Soldering**
- **Testing the Board**

CONTACT

1. **Mrs. T.Prasanna-9440563878**
tprasanna@stanley.edu.in
2. **Ms U.Himavarsha-8897419523**
himavarsha@stanley.edu.in

REGISTRATION FEE DETAILS

- **Registration Fee:-Rs 300**
- **Registration is on first cum first basis**
- **Snacks to be provided**

STUDENT COORDINATORS

1. **S.V.S Deekshitha Reddy-9849562863**
II SEM ECE
2. **P.Rishika Rao-9177000901**
II SEM ECE